



AI Minimizes Scheduling Gaps

Healthcare Provider Uses AI to **Forecast** Nurse Scheduling Gaps

CLIENT INFO



Healthcare Industry

\$5.2B

Annual Revenue

20K

Employees Nationwide

Problem

Diverse team of nurses across multiple locations



Frequent **unplanned** absences and scheduling gaps



Caregiver-to-patient ratio is **inconsistent**



Solution + Result

01

Use of **predictive insights** generated by machine learning

02

Eliminate idle providers due to overscheduling

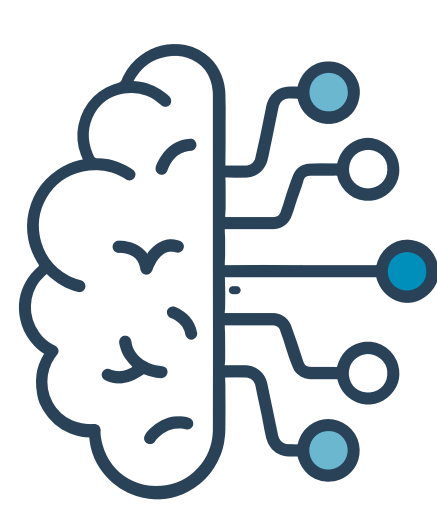
03

Improved gap visibility and **coverage** across all locations

04

Ensure caregiver-to-patient ratio is upheld

Technical Use Case



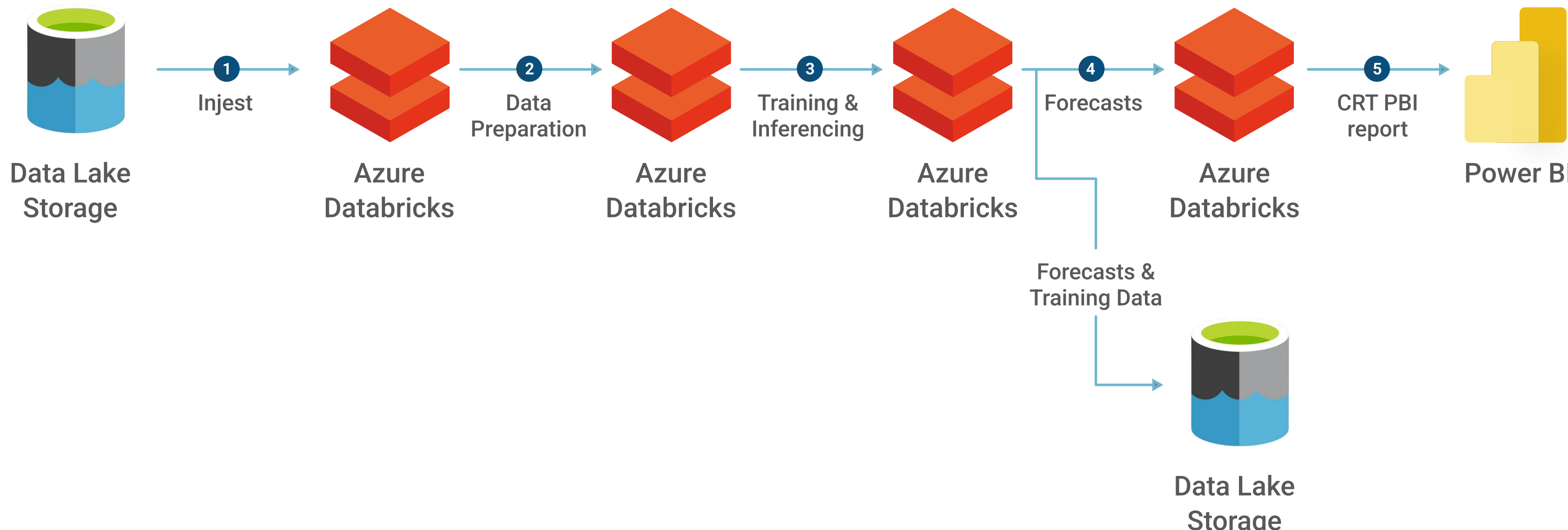
Data & AI Focus

AI / Machine Learning

Power BI

Azure Databricks

A peek behind the scenes
Here's a high-level overview of the forecasting process that helps anticipate and address staffing gaps.



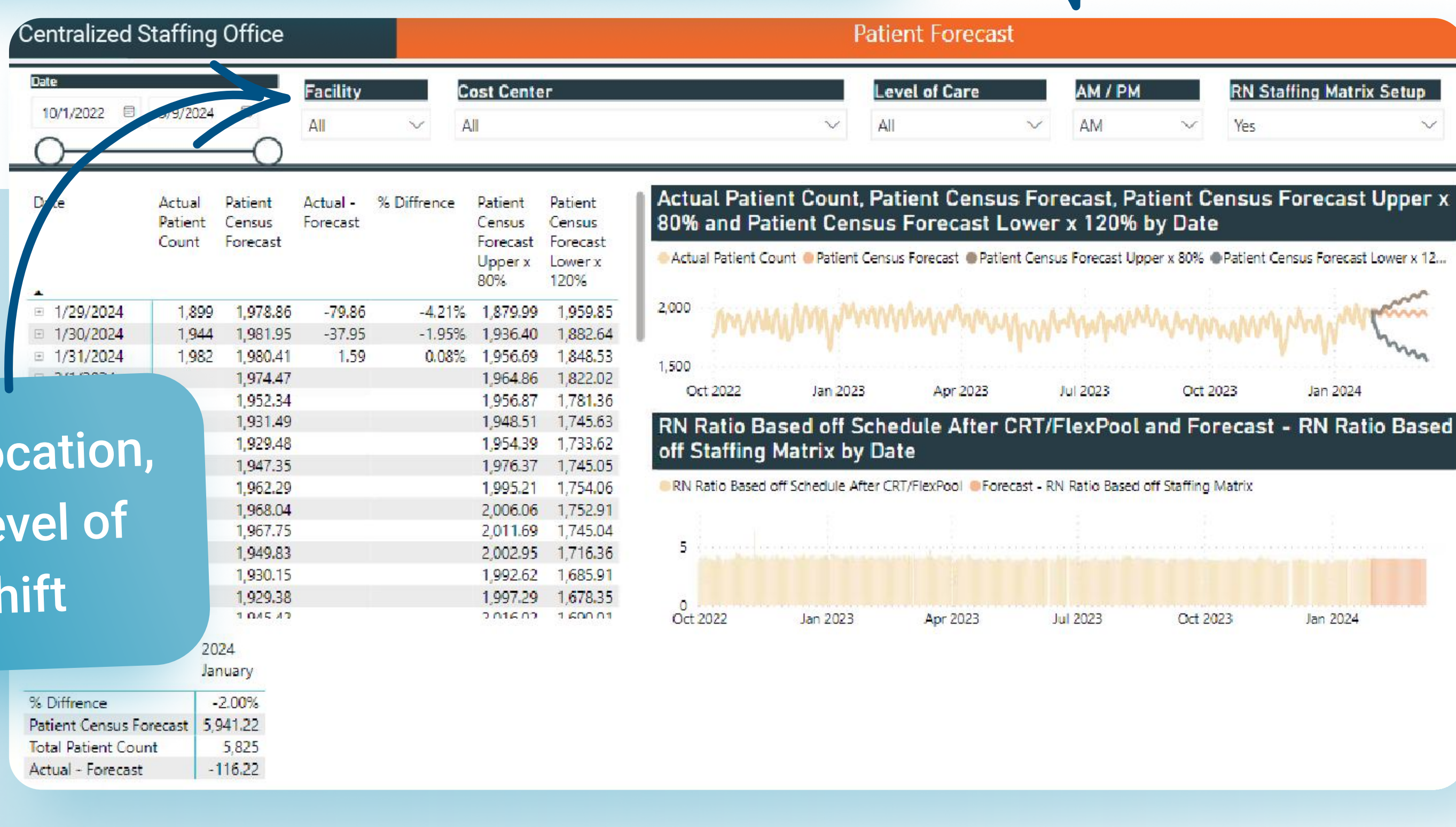
AI Complexity Level



Power BI powerhouse

Power BI dashboard displays the forecast, its prediction interval and how the forecast compares to actuals

Drill down by location, cost center, level of care and shift



Model forecasts are used to determine how many nurses to schedule. Based on the schedule, any gaps that exists can then be filled.



AMERICAS PARTNER OF THE YEAR

Data & AI

2024

Ready to Recalibrate your enterprise growth trajectory by embracing AI technology?

3cloudsolutions.com sales@3cloudsolutions.com

888-88-AZURE